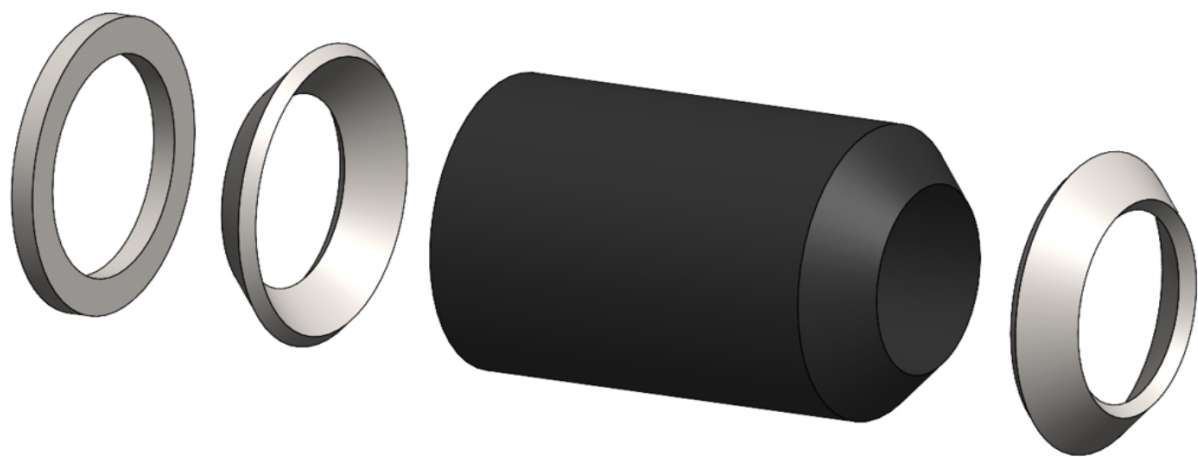


MIL-S-24235/2 SIZES 4 - 9

PACKING ASSEMBLIES FOR M24235/1 PRESSUREPROOF BULKHEAD TUBES

GROMMETS - NEOPRENE OR SILICONE
GLAND RINGS - ZINC PLATED STEEL
BEVEL WASHERS - NYLON



| | SYMBOL # | PACKING ASSEMBLY PART # | GROMMET INSIDE DIAMETER | PENN EL PART # (NEOPRENE GROMMET) | PENN EL PART # (SILICONE GROMMET) |
|-------------|----------|----------------------------|----------------------------|--------------------------------------|--------------------------------------|
| TUBE SIZE 4 | 2408.5 | M24235/2-*030 | 1.075 | PA-NE-030 | PA-SI-030 |
| | 2408.1 | M24235/2-*031 | 1.115 | PA-NE-031 | PA-SI-031 |
| | 2408.2 | M24235/2-*032 | 1.130 | PA-NE-032 | PA-SI-032 |
| | 2408.3 | M24235/2-*033 | 1.174 | PA-NE-033 | PA-SI-033 |
| | 2408.4 | M24235/2-*034 | 1.250 | PA-NE-034 | PA-SI-034 |
| TUBE SIZE 5 | 2409.1 | M24235/2-*035 | 1.300 | PA-NE-035 | PA-SI-035 |
| | 2409.2 | M24235/2-*036 | 1.370 | PA-NE-036 | PA-SI-036 |
| | 2409.3 | M24235/2-*037 | 1.415 | PA-NE-037 | PA-SI-037 |
| TUBE SIZE 6 | 2410.1 | M24235/2-*038 | 1.470 | PA-NE-038 | PA-SI-038 |
| | 2410.2 | M24235/2-*039 | 1.525 | PA-NE-039 | PA-SI-039 |
| | 2410.3 | M24235/2-*040 | 1.570 | PA-NE-040 | PA-SI-040 |
| TUBE SIZE 7 | 2411.5 | M24235/2-*041 | 1.675 | PA-NE-041 | PA-SI-041 |
| | 2411.1 | M24235/2-*042 | 1.715 | PA-NE-042 | PA-SI-042 |
| | 2411.2 | M24235/2-*043 | 1.750 | PA-NE-043 | PA-SI-043 |
| | 2411.3 | M24235/2-*044 | 1.783 | PA-NE-044 | PA-SI-044 |
| | 2411.4 | M24235/2-*045 | 1.840 | PA-NE-045 | PA-SI-045 |
| TUBE SIZE 8 | 2412.1 | M24235/2-*046 | 1.185 | PA-NE-046 | PA-SI-046 |
| | 2412.2 | M24235/2-*047 | 2.000 | PA-NE-047 | PA-SI-047 |
| | 2412.3 | M24235/2-*048 | 2.119 | PA-NE-048 | PA-SI-048 |
| TUBE SIZE 9 | 2413.1 | M24235/2-*049 | 2.200 | PA-NE-018 | PA-SI-018 |
| | 2413.2 | M24235/2-*050 | 2.250 | PA-NE-019 | PA-SI-019 |

PENN EL SERVICE COMPANY

801 STONY BATTERY ROAD
LANDISVILLE, PA 17538
717-898-2202
pennel@bearonmfg.com
pennel.com

