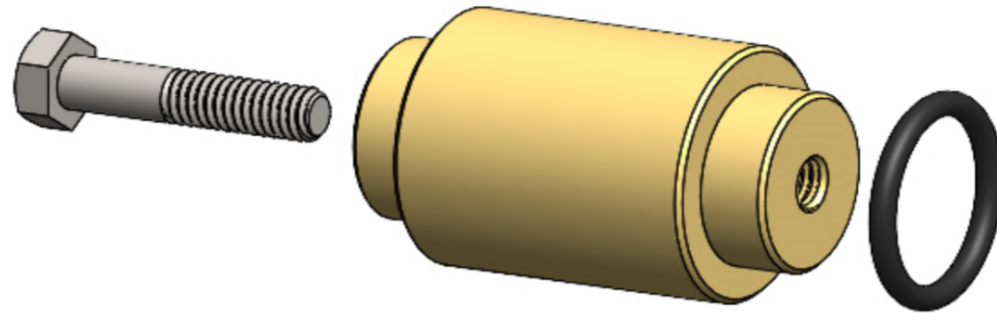


MIL-S-24235/1 SEALING PLUGS

MIL-STD-2003-3A METHOD 3A-18-1 and 3A-18-2, 9000-S6202-73980

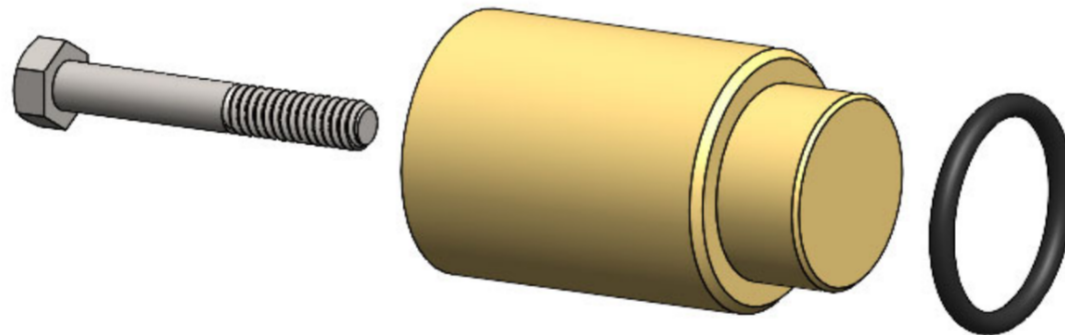
PLUG - BRASS
 "O" RING - AS568 BUNA-N
 BOLT - ZINC PLATED STEEL
PARTS MAY BE ORDERED INDIVIDUALLY



ASSEMBLY CONSISTS OF 2 EACH
 PLUG, "O" RING AND BOLT

TUBE SIZE 1 - 3

TUBE SIZE	DWG 73980	MIL-STD-2003	"O" RING	BOLT	PENN EL PART #
1	51311-1	3A191-1	ARP 568-113	5/16-18 X 1-1/2	ASP-BR-1
2	51311-2	3A191-2	ARP 568-116	5/16-18 X 1-1/2	ASP-BR-2
3	51311-3	3A191-3	ARP 568-214	5/16-18 X 1-1/2	ASP-BR-3



ASSEMBLY CONSISTS OF 2 EACH
 PLUG, "O" RING AND BOLT

TUBE SIZE 4 - 9

TUBE SIZE	DWG 73980	MIL-STD-2003	"O" RING	BOLT	PENN EL PART #
4	51311-4	3A191-4	ARP 568-218	5/16-18 X 3	ASP-BR-4
5	51311-5	3A191-5	ARP 568-220	5/16-18 X 3	ASP-BR-5
6	51311-6	3A191-6	ARP 568-223	5/16-18 X 3	ASP-BR-6
7	51311-7	3A191-7	ARP 568-225	5/16-18 X 3	ASP-BR-7
8	51311-8	3A191-8	ARP 568-227	5/16-18 X 3	ASP-BR-8
9	51311-9	3A191-9	ARP 568-228	5/16-18 X 3	ASP-BR-9

PENN EL SERVICE COMPANY

801 STONY BATTERY ROAD
 LANDISVILLE, PA 17538
 717-898-2202
 pennel@bearonmfg.com
 pennel.com

