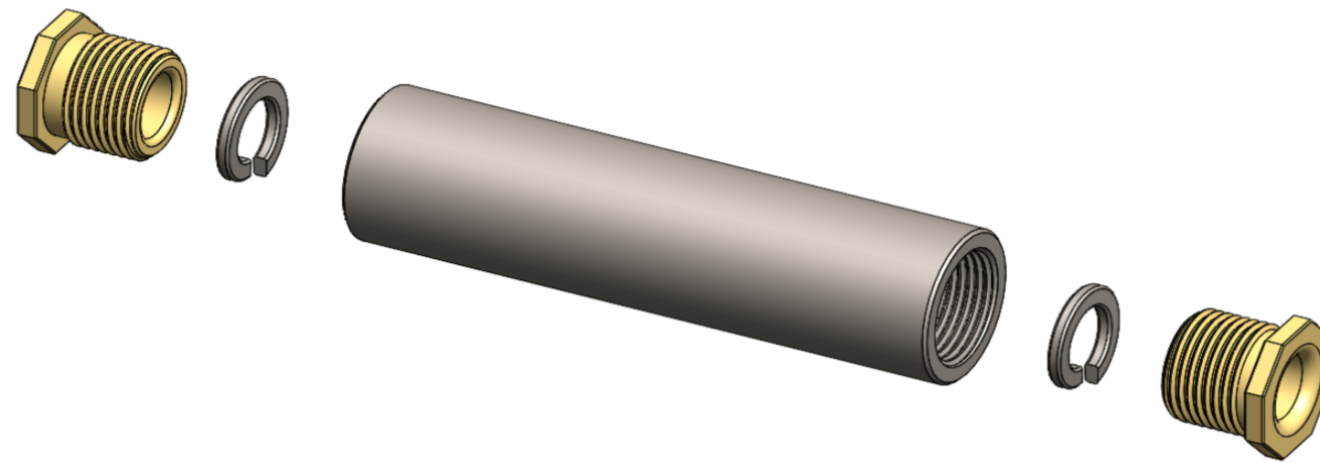


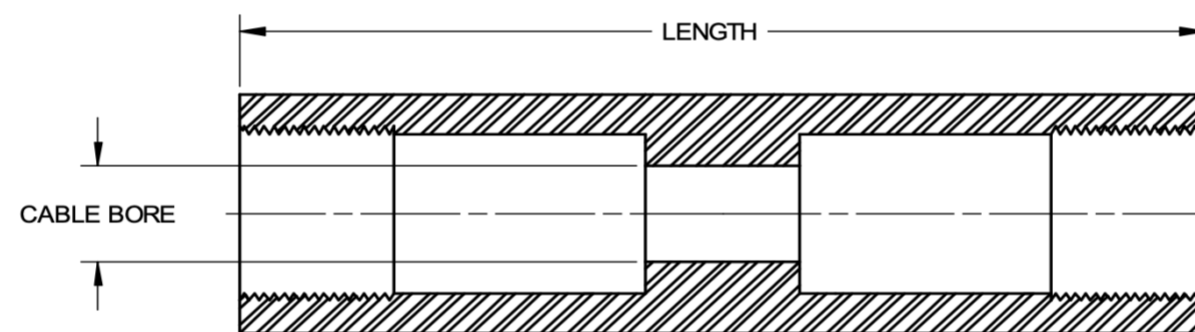
MIL-S-24235/1

STUFFING TUBES FOR ELECTRIC CABLE PENETRATIONS OF
PRESSUREPROOF SUBMARINE BULKHEADS AND SONAR DOMES

GRADE HT
STEEL TUBE, BRASS GLAND NUT AND STAINLESS STEEL LOCKWASHER



PACKING KITS
SEE M24235/2
NEOPRENE OR SILICONE
(SOLD SEPARATELY)



LENGTH MAY BE EXTENDED, INCREASING THE CABLE BORE LENGTH

| SIZE | CABLE BORE | STANDARD LENGTH | SYMBOL # | M24235 ASSEMBLY # | PENN EL PART # | M24235/2 PACKING KITS |
|------|------------|-----------------|----------|-------------------|----------------|-----------------------|
| 1 | 0.609 | 5-5/8 | 2405 HT | M24235/1-101 | ATS-HT-1-0563 | PA-NE-001 to 007 |
| 2 | 0.812 | 6-1/4 | 2406 HT | M24235/1-102 | ATS-HT-2-0625 | PA-NE-008 to 012 |
| 3 | 1.062 | 7-1/8 | 2407 HT | M24235/1-103 | ATS-HT-3-0713 | PA-NE-013 to 019 |
| 4 | 1.265 | 8-1/2 | 2408 HT | M24235/1-104 | ATS-HT-4-0850 | PA-NE-030 to 034 |
| 5 | 1.437 | 10 | 2409 HT | M24235/1-105 | ATS-HT-5-1000 | PA-NE-035 to 037 |
| 6 | 1.625 | 10-5/8 | 2410 HT | M24235/1-106 | ATS-HT-6-1063 | PA-NE-038 to 040 |
| 7 | 1.875 | 11-3/8 | 2411 HT | M24235/1-107 | ATS-HT-7-1138 | PA-NE-041 to 045 |
| 8 | 2.187 | 11-5/8 | 2412 HT | M24235/1-108 | ATS-HT-8-1163 | PA-NE-046 to 048 |
| 9 | 2.312 | 11-7/8 | 2413 HT | M24235/1-109 | ATS-HT-9-1188 | PA-NE-049 to 050 |

PENN EL SERVICE COMPANY

801 STONY BATTERY ROAD
LANDISVILLE, PA 17538
717-898-2202
pennel@bearonmfg.com
pennel.com

