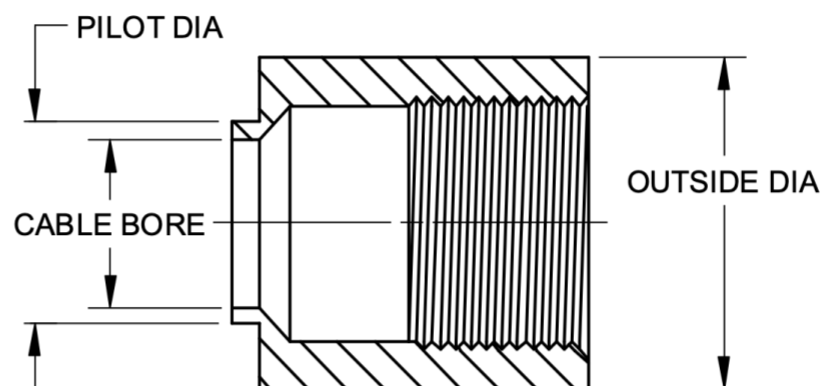
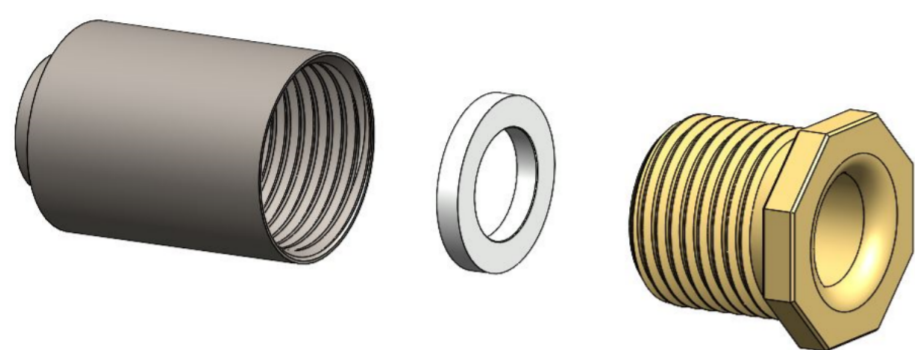


MIL-S-24235/14

STUFFING TUBES, METAL, AND PACKING ASSEMBLIES FOR ELECTRIC CABLES,
FOR SHEET METAL ENCLOSURES

STEEL FORMERLY TYPE 51
STEEL TUBE, BRASS GLAND NUT, ZINC PLATED STEEL GLAND RING



PREFORMED PACKING
MIL-P-16685
(SOLD SEPARATELY)



SIZE	CABLE BORE	PILOT DIAMETER	OUTSIDE DIAMETER	M24235 ASSEMBLY #	PENN EL PART #	PREFORMED PACKING #
A	0.406	0.660	15/16	M24235/14-121	A51-ST-A	MP-BA-A2
B	0.515	0.660	1-1/16	M24235/14-122	A51-ST-B	MP-BA-B2
C	0.640	0.785	1-3/16	M24235/14-123	A51-ST-C	MP-BA-C2
D	0.750	0.895	1-5/16	M24235/14-124	A51-ST-D	MP-BA-D2
E	0.812	0.957	1-5/16	M24235/14-125	A51-ST-E	MP-BA-E2
F	0.843	0.988	1-3/8	M24235/14-126	A51-ST-F	MP-BA-F2
G	0.953	1.098	1-5/8	M24235/14-127	A51-ST-G	MP-BA-G2
J	1.062	1.207	1-3/4	M24235/14-128	A51-ST-J	MP-BA-J2
K	1.171	1.316	1-7/8	M24235/14-129	A51-ST-K	MP-BA-K2
L	1.265	1.410	1-15/16	M24235/14-130	A51-ST-L	MP-BA-L2
M	1.406	1.551	2-1/8	M24235/14-131	A51-ST-M	MP-BA-M2
N	1.515	1.716	2-3/16	M24235/14-132	A51-ST-N	MP-BA-N2
P	1.625	1.826	2-5/16	M24235/14-133	A51-ST-P	MP-BA-P2
R	1.750	1.951	2-7/16	M24235/14-134	A51-ST-R	MP-BA-R2
S	1.875	2.076	2-7/8	M24235/14-135	A51-ST-S	MP-BA-S2
T	2.062	2.364	3-1/16	M24235/14-136	A51-ST-T	MP-BA-T2
V	2.187	2.489	3-3/16	M24235/14-137	A51-ST-V	MP-BA-V2
W	2.312	2.614	3-5/16	M24235/14-138	A51-ST-W	MP-BA-W2
X	2.500	2.802	3-1/2	M24235/14-139	A51-ST-X	MP-BA-X2
Y	2.609	2.911	3-5/8	M24235/14-140	A51-ST-Y	MP-BA-Y2
Z	2.781	3.083	3-13/16	M24235/14-141	A51-ST-Z	MP-BA-Z2
AA	2.875	3.177	4-1/16	M24235/14-142	A51-ST-AA	MP-BA-AA2

PENN EL SERVICE COMPANY

801 STONY BATTERY ROAD
LANDISVILLE, PA 17538
717-898-2202
pennel@bearonmfg.com
pennel.com

