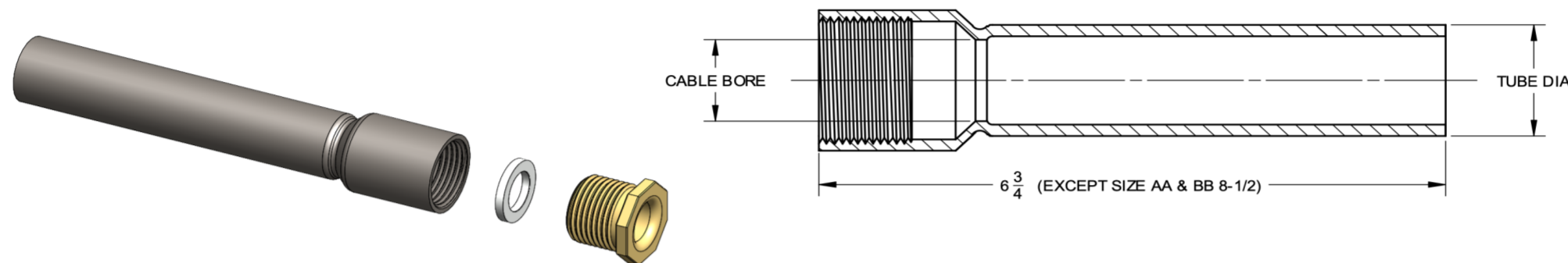


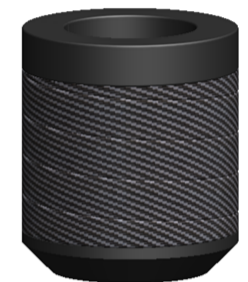
MIL-S-24235/17

STEEL BULKHEAD SWAGED TUBES STEEL TUBE, BRASS GLAND NUT, ZINC PLATED STEEL GLAND RING

STUFFING TUBES, METAL, AND PACKING ASSEMBLIES FOR ELECTRIC CABLES, SWAGE
TYPE, STEEL AND ALUMINUM, FOR DECK AND BULKHEADS WITH PIPE PROTECTION



PREFORMED PACKING
MIL-P-16685
(SOLD SEPARATELY)



SIZE	CABLE BORE	TUBE DIAMETER	SYMBOL #	M24235 ASSEMBLY #	PENN EL PART #	PREFORMED PACKING #
A	.406	1-1/16	1701	M24235/17-001	A17-ST-A-0675	MP-BA-A1
B	.515	1-1/16	1702	M24235/17-002	A17-ST-B-0675	MP-BA-B1
C	.640	1-5/16	1703	M24235/17-003	A17-ST-C-0675	MP-BA-C1
D	.750	1-5/16	1704	M24235/17-004	A17-ST-D-0675	MP-BA-D1
E	.812	1-5/16	1705	M24235/17-005	A17-ST-E-0675	MP-BA-E1
F	.843	1-5/16	1706	M24235/17-006	A17-ST-F-0675	MP-BA-F1
G	.953	1-21/32	1707	M24235/17-007	A17-ST-G-0675	MP-BA-G1
J	1.062	1-29/32	1708	M24235/17-008	A17-ST-J-0675	MP-BA-J1
K	1.171	1-29/32	1709	M24235/17-009	A17-ST-K-0675	MP-BA-K1
L	1.265	1-29/32	1710	M24235/17-010	A17-ST-L-0675	MP-BA-L1
M	1.406	2-3/8	1711	M24235/17-011	A17-ST-M-0675	MP-BA-M1
N	1.515	2-3/8	1712	M24235/17-012	A17-ST-N-0675	MP-BA-N1
P	1.625	2-3/8	1713	M24235/17-013	A17-ST-P-0675	MP-BA-P1
R	1.750	2-3/8	1714	M24235/17-014	A17-ST-R-0675	MP-BA-R1
S	1.875	2-7/8	1715	M24235/17-015	A17-ST-S-0675	MP-BA-S1
T	2.062	3-1/2	1716	M24235/17-016	A17-ST-T-0675	MP-BA-T1
V	2.187	3-1/2	1717	M24235/17-017	A17-ST-V-0675	MP-BA-V1
W	2.312	3-1/2	1718	M24235/17-018	A17-ST-W-0675	MP-BA-W1
X	2.500	3-1/2	1719	M24235/17-019	A17-ST-X-0675	MP-BA-X1
Y	2.609	4	1720	M24235/17-020	A17-ST-Y-0675	MP-BA-Y1
Z	2.781	4	1721	M24235/17-021	A17-ST-Z-0675	MP-BA-Z1
AA	2.875	4	1722	M24235/17-022	A17-ST-AA-0675	MP-BA-AA1
BB	3.157	4-1/2	1723	M24235/17-023	A17-ST-BB-0675	MP-BA-BB1

MODS AVAILABLE: MATERIAL 316 STAINLESS STEEL

PENN EL SERVICE COMPANY

801 STONY BATTERY ROAD
LANDISVILLE, PA 17538
717-898-2202
pennel@bearonmfg.com
pennel.com

