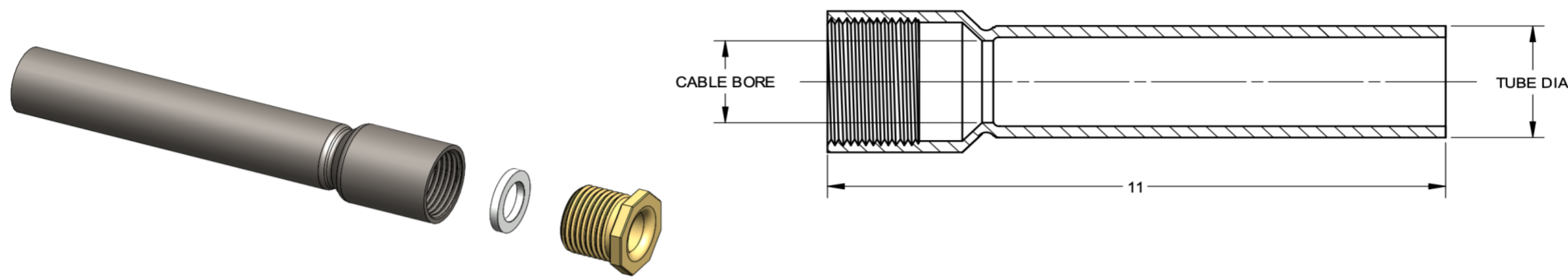


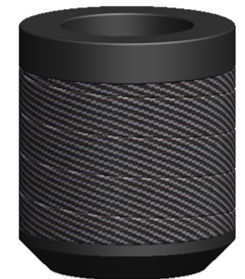
MIL-S-24235/17

STEEL DECK SWAGED TUBES STEEL TUBE, BRASS GLAND NUT, ZINC PLATED STEEL GLAND RING

STUFFING TUBES, METAL, AND PACKING ASSEMBLIES FOR ELECTRIC CABLES, SWAGE
TYPE, STEEL AND ALUMINUM, FOR DECK AND BULKHEADS WITH PIPE PROTECTION



PREFORMED PACKING
MIL-P-16685
(SOLD SEPARATELY)



SIZE	CABLE BORE	TUBE DIAMETER	SYMBOL #	M24235 ASSEMBLY #	PENN EL PART #	PREFORMED PACKING #
A	.406	1-1/16	1761	M24235/17-061	A17-ST-A-1100	MP-BA-A1
B	.515	1-1/16	1762	M24235/17-062	A17-ST-B-1100	MP-BA-B1
C	.640	1-5/16	1763	M24235/17-063	A17-ST-C-1100	MP-BA-C1
D	.750	1-5/16	1764	M24235/17-064	A17-ST-D-1100	MP-BA-D1
E	.812	1-5/16	1765	M24235/17-065	A17-ST-E-1100	MP-BA-E1
F	.843	1-5/16	1766	M24235/17-066	A17-ST-F-1100	MP-BA-F1
G	.953	1-21/32	1767	M24235/17-067	A17-ST-G-1100	MP-BA-G1
J	1.062	1-29/32	1768	M24235/17-068	A17-ST-J-1100	MP-BA-J1
K	1.171	1-29/32	1769	M24235/17-069	A17-ST-K-1100	MP-BA-K1
L	1.265	1-29/32	1770	M24235/17-070	A17-ST-L-1100	MP-BA-L1
M	1.406	2-3/8	1771	M24235/17-071	A17-ST-M-1100	MP-BA-M1
N	1.515	2-3/8	1772	M24235/17-072	A17-ST-N-1100	MP-BA-N1
P	1.625	2-3/8	1773	M24235/17-073	A17-ST-P-1100	MP-BA-P1
R	1.750	2-3/8	1774	M24235/17-074	A17-ST-R-1100	MP-BA-R1
S	1.875	2-7/8	1775	M24235/17-075	A17-ST-S-1100	MP-BA-S1
T	2.062	3-1/2	1776	M24235/17-076	A17-ST-T-1100	MP-BA-T1
V	2.187	3-1/2	1777	M24235/17-077	A17-ST-V-1100	MP-BA-V1
W	2.312	3-1/2	1778	M24235/17-078	A17-ST-W-1100	MP-BA-W1
X	2.500	3-1/2	1779	M24235/17-079	A17-ST-X-1100	MP-BA-X1
Y	2.609	4	1780	M24235/17-080	A17-ST-Y-1100	MP-BA-Y1
Z	2.781	4	1781	M24235/17-081	A17-ST-Z-1100	MP-BA-Z1
AA	2.875	4	1782	M24235/17-082	A17-ST-AA-1100	MP-BA-AA1
BB	3.157	4-1/2	1783	M24235/17-083	A17-ST-BB-1100	MP-BA-BB1

MODS AVAILABLE: 12-1/2" LENGTH | MATERIAL 316 STAINLESS STEEL | BENT 90 DEGREES

PENN EL SERVICE COMPANY

801 STONY BATTERY ROAD
LANDISVILLE, PA 17538
717-898-2202
pennel@bearonmfg.com
pennel.com

