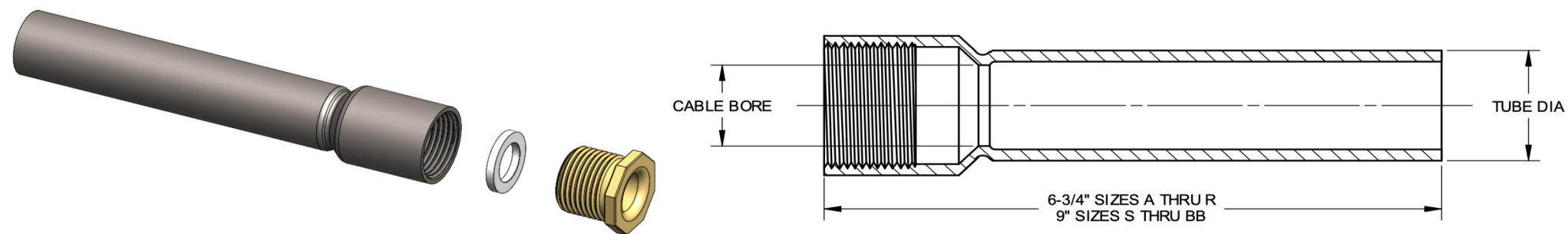


MIL-S-24235/18

STEEL BULKHEAD SWAGED TUBES STEEL TUBE, BRASS GLAND NUT, ZINC PLATED STEEL GLAND RING

STUFFING TUBES, METAL, AND PACKING ASSEMBLIES FOR ELECTRIC CABLES, SWAGE
TYPE, STEEL AND ALUMINUM, FOR DECK AND BULKHEADS WITH PIPE PROTECTION



PREFORMED PACKING
MIL-P-16685
(SOLD SEPARATELY)



SIZE	CABLE BORE	TUBE DIAMETER	SYMBOL #	M24235 ASSEMBLY #	PENN EL PART #	PREFORMED PACKING #
A	.406	27/32	1821	M24235/18-001	A18-ST-A-0675	MP-BA-A1
B	.515	27/32	1822	M24235/18-002	A18-ST-B-0675	MP-BA-B1
C	.640	1-1/16	1823	M24235/18-003	A18-ST-C-0675	MP-BA-C1
D	.750	1-1/16	1824	M24235/18-004	A18-ST-D-0675	MP-BA-D1
E	.812	1-21/64	1825	M24235/18-005	A18-ST-E-0675	MP-BA-E1
F	.843	1-21/64	1826	M24235/18-006	A18-ST-F-0675	MP-BA-F1
G	.953	1-21/64	1827	M24235/18-007	A18-ST-G-0675	MP-BA-G1
J	1.062	1-21/32	1828	M24235/18-008	A18-ST-J-0675	MP-BA-J1
K	1.171	1-21/32	1829	M24235/18-009	A18-ST-K-0675	MP-BA-K1
L	1.265	1-21/32	1830	M24235/18-010	A18-ST-L-0675	MP-BA-L1
M	1.406	1-29/32	1831	M24235/18-011	A18-ST-M-0675	MP-BA-M1
N	1.515	1-29/32	1832	M24235/18-012	A18-ST-N-0675	MP-BA-N1
P	1.625	2-5/16	1833	M24235/18-013	A18-ST-P-0675	MP-BA-P1
R	1.750	2-5/16	1834	M24235/18-014	A18-ST-R-0675	MP-BA-R1
S	1.875	2-5/16	1835	M24235/18-015	A18-ST-S-0900	MP-BA-S1
T	2.062	2-7/8	1836	M24235/18-016	A18-ST-T-0900	MP-BA-T1
V	2.187	2-7/8	1837	M24235/18-017	A18-ST-V-0900	MP-BA-V1
W	2.312	2-7/8	1838	M24235/18-018	A18-ST-W-0900	MP-BA-W1
X	2.500	3-1/2	1839	M24235/18-019	A18-ST-X-0900	MP-BA-X1
Y	2.609	3-1/2	1840	M24235/18-020	A18-ST-Y-0900	MP-BA-Y1
Z	2.781	3-1/2	1841	M24235/18-021	A18-ST-Z-0900	MP-BA-Z1
AA	2.875	3-1/2	1842	M24235/18-022	A18-ST-AA-0900	MP-BA-AA1
BB	3.157	4	1843	M24235/18-023	A18-ST-BB-0900	MP-BA-BB1

MODS AVAILABLE: MATERIAL 316 STAINLESS STEEL

PENN EL SERVICE COMPANY

801 STONY BATTERY ROAD
LANDISVILLE, PA 17538
717-898-2202
pennel@bearonmfg.com
pennel.com

