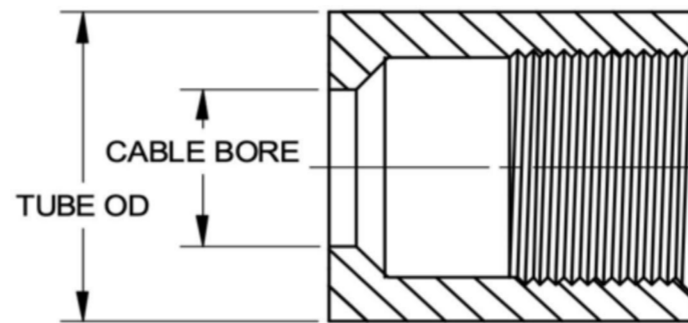
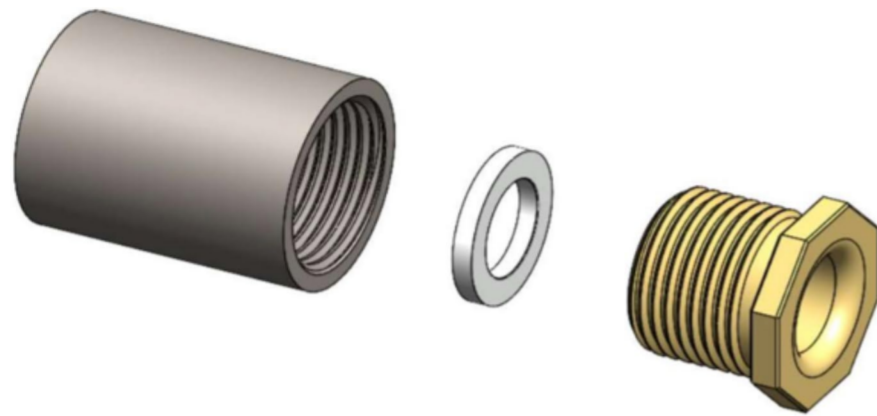


MIL-S-24235/10

STUFFING TUBES, METAL, AND PACKING ASSEMBLIES FOR ELECTRIC CABLES, BRASS AND STEEL, FOR DECKS AND BULKHEADS WITHOUT PIPE PROTECTION

FORMERLY 30-2A
STEEL TUBE, BRASS GLAND NUT AND ZINC PLATED STEEL GLAND RING



PREFORMED PACKING
MIL-P-16685
(SOLD SEPARATELY)



| SIZE | CABLE BORE | OUTSIDE DIAMETER | SYMBOL # | M24235 ASSEMBLY # | PENN EL PART # | PREFORMED PACKING # |
|------|------------|------------------|----------|-------------------|----------------|---------------------|
| A | 0.406 | 1-1/8 | 1600 | M24235/10-01 | A30-ST-A | MP-BA-A1 |
| B | 0.515 | 1-1/4 | 1601 | M24235/10-02 | A30-ST-B | MP-BA-B1 |
| C | 0.640 | 1-3/8 | 1602 | M24235/10-03 | A30-ST-C | MP-BA-C1 |
| D | 0.750 | 1-1/2 | 1603 | M24235/10-04 | A30-ST-D | MP-BA-D1 |
| E | 0.812 | 1-5/8 | 1604 | M24235/10-05 | A30-ST-E | MP-BA-E1 |
| F | 0.843 | 1-5/8 | 1605 | M24235/10-06 | A30-ST-F | MP-BA-F1 |
| G | 0.953 | 1-13/16 | 1606 | M24235/10-07 | A30-ST-G | MP-BA-G1 |
| J | 1.062 | 2 | 1607 | M24235/10-08 | A30-ST-J | MP-BA-J1 |
| K | 1.171 | 2-1/16 | 1608 | M24235/10-09 | A30-ST-K | MP-BA-K1 |
| L | 1.265 | 2-1/8 | 1609 | M24235/10-10 | A30-ST-L | MP-BA-L1 |
| M | 1.406 | 2-5/16 | 1610 | M24235/10-11 | A30-ST-M | MP-BA-M1 |
| N | 1.515 | 2-7/16 | 1611 | M24235/10-12 | A30-ST-N | MP-BA-N1 |
| P | 1.625 | 2-3/4 | 1612 | M24235/10-13 | A30-ST-P | MP-BA-P1 |
| R | 1.750 | 2-3/4 | 1613 | M24235/10-14 | A30-ST-R | MP-BA-R1 |
| S | 1.875 | 3-1/16 | 1614 | M24235/10-15 | A30-ST-S | MP-BA-S1 |
| T | 2.062 | 3-1/4 | 1615 | M24235/10-16 | A30-ST-T | MP-BA-T1 |
| V | 2.187 | 3-3/8 | 1616 | M24235/10-17 | A30-ST-V | MP-BA-V1 |
| W | 2.312 | 3-1/2 | 1617 | M24235/10-18 | A30-ST-W | MP-BA-W1 |
| X | 2.500 | 3-7/8 | 1618 | M24235/10-19 | A30-ST-X | MP-BA-X1 |
| Y | 2.609 | 3-7/8 | 1619 | M24235/10-20 | A30-ST-Y | MP-BA-Y1 |
| Z | 2.781 | 3-15/16 | 1620 | M24235/10-21 | A30-ST-Z | MP-BA-Z1 |
| AA | 2.875 | 4-1/8 | 1621 | M24235/10-22 | A30-ST-AA | MP-BA-AA1 |
| BB | 3.157 | 4-1/2 | 1622 | M24235/10-23 | A30-ST-BB | MP-BA-BB1 |

PENN EL SERVICE COMPANY

801 STONY BATTERY ROAD
LANDISVILLE, PA 17538
717-898-2202
pennel@bearonmfg.com
pennel.com

